




## Geomorphology of the Durmitor Mountains and surrounding plateau Jezerska Površ (Montenegro)

Klaas Annys, Amaury Frankl, Velibor Spalević, Milic Čurović, Dragan Borota & Jan Nyssen


To cite this article: Klaas Annys, Amaury Frankl, Velibor Spalević, Milic Čurović, Dragan Borota & Jan Nyssen (2014) Geomorphology of the Durmitor Mountains and surrounding plateau Jezerska Površ (Montenegro), Journal of Maps, 10:4, 600-611, DOI: [10.1080/17445647.2014.909338](https://doi.org/10.1080/17445647.2014.909338)

To link to this article: <https://doi.org/10.1080/17445647.2014.909338>

 View supplementary material [↗](#)


 Published online: 23 Apr 2014.

 Submit your article to this journal [↗](#)

 Article views: 2167

 View related articles [↗](#)

 View Crossmark data [↗](#)

 Citing articles: 3 View citing articles [↗](#)

## SCIENCE

### Geomorphology of the Durmitor Mountains and surrounding plateau Jezerska Površ (Montenegro)

Klaas Annys<sup>a</sup>, Amaury Frankl<sup>a\*</sup>, Velibor Spalević<sup>b</sup>, Milic Čurović<sup>b</sup>, Dragan Borota<sup>c</sup> and Jan Nyssen<sup>a</sup>

<sup>a</sup>Department of Geography, Ghent University, Ghent, Belgium; <sup>b</sup>Forestry Department, University of Montenegro, Podgorica, Montenegro; <sup>c</sup>Faculty of Forestry, University of Belgrade, Belgrade, Serbia

(Received 21 October 2013; resubmitted 22 March 2014; accepted 25 March 2014)

The geomorphological map of the northeastern Durmitor Mountains and the plateau Jezerska Površ (1:10,000, 47 km<sup>2</sup>, Montenegro, Dinaric Alps) was prepared from an intensive fieldwork campaign and remote sensing analysis, and was compiled within a GIS. The basic components of the legend are (i) processes/genesis, (ii) materials, (iii) morphometry/morphography, (iv) hydrography, (v) vegetation and (vi) anthropogenic features. The geomorphological setting of the area consists of Mesozoic limestones which are physically deformed by Quaternary glacial and periglacial activity and chemically affected during interglacials. Glacial deposits on the plateau of three middle-to-late Pleistocene glacial phases are intersected by a well-developed network of palaeo meltwater channels. In the mountains, Holocene glacier retreat left behind a series of well-preserved recessional moraines. The map serves as a valuable tool for Quaternary research in the Durmitor Mountains, and also in other mountains of the Western Balkans.

**Keywords:** Debeli Namet glacier; Dinaric Alps; Geographic information system; Geomorphological map; Glacial landforms; Karst

#### 1. Introduction

The Durmitor Mountains are situated in northern Montenegro and culminate at 2523 m a.s.l. (Bobotov Kuk). They relate to the Dinaric Alps, which stretch from the Julian Alps in Slovenia to the Prokletije Mountains in northern Albania (Figure 1). As for many other Mediterranean mountain ranges, the Durmitor Mountains are built up of carbonate rocks of Mesozoic age (Djurović, 2009), that were folded and uplifted during the Alpine orogeny (Morley, 2007). The topography is characterised by a Quaternary glacial-interglacial imprint, that drastically modified the pre-glacial topography (Fagan, 2009), and geomorphological processes were altered by human occupation throughout the Holocene (Lewin & Woodward, 2009).

This study focuses on the northeastern part of the Durmitor Mountains and surrounding lower plateau (Figure 1), where evidence is found for three middle-to-late Pleistocene glacial phases which have been correlated to Marine Isotope Stages (MIS): the Skamnellian Stage (MIS 12), the Vlasian Stage (MIS 6) and the Tymphian Stage (MIS 5d-2) (Hughes, Woodward, van

---

\*Corresponding author. Email: [amaury.frankl@ugent.be](mailto:amaury.frankl@ugent.be)



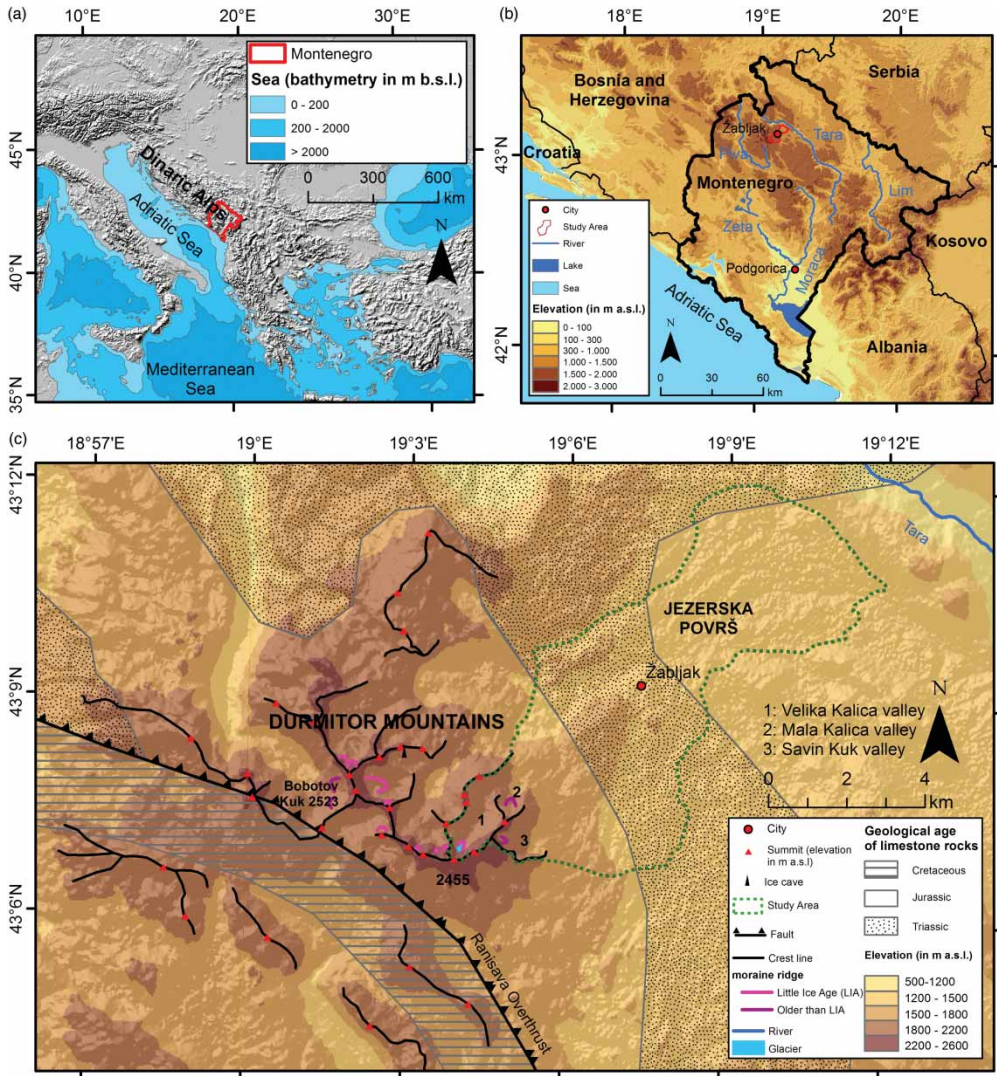


Figure 1. Location of the study area; (a) position of Montenegro in Western Balkan (available from <http://naturalearthdata.com/>); (b) position of the study area in Montenegro on the SRTM DEM (available from <http://srtm.csi.cgiar.org/>); (c) Durmitor Mountains and surrounding plateau Jezerska Površ, indicating several upper cirque moraine ridges on the ASTER DEM (available from <http://reverb.echo.nasa.gov/reverb/>).

Calsteren, & Thomas, 2011). These cold stages are in concordance with the findings in other mountains in Montenegro (Hughes, Woodward, van Calsteren, Thomas, & Adamson, 2010) and in the Balkan peninsula (Hughes, Woodward, & Gibbard, 2006). The degree of severity of the cold stages was most likely determined by differences in temperatures and not by a decrease in moisture supply (Hughes & Braithwaite, 2008). Fall in temperature was of the same magnitude as values calculated by Hughes and Braithwaite (2008) for glacial stages in the Pindus Mountains in Greece. Hereby, the oldest glaciation was the most important in severity and longevity; younger glaciations were smaller in extent. The present-day climate in northern Montenegro is determined

by its mountainous character, with snow cover from November to April, moist conditions all year long and warm summers (Kern, Suranyi, Molnar, Nagy, & Balogh, 2006; Kottek, Grieser, Beck, Rudolf, & Rubel, 2006; Nyssen et al., 2012). In Žabljak, at 1450 m a.s.l., the annual total precipitation is 1454 mm and the mean annual temperature is 5.1 °C (Kern et al., 2006). Present-day glacial activity is limited to the avalanche-fed Debeli Namet glacier (0.05 km<sup>2</sup>) in the Velika Kalica valley with an Equilibrium Line Altitude (ELA) at 2150 m a.s.l. The glacier is the remnant of a larger glacier that gradually retreated during the Holocene and is currently one of the southernmost glaciers in Europe (Djurović, 2012; Grunewald & Scheithauer, 2010; Hughes, 2007). The dominant trend in Žabljak for the last 50 years, just as in the whole northern Montenegrin area, is one towards higher mean annual temperatures and larger inter-annual fluctuations (Djurović, 2012).

In the Balkans, few studies exist on Quaternary glaciations and the relationship with palaeoclimates (Hughes et al., 2006). In addition, there are few detailed geomorphological maps for this region in which karst and glacial geomorphologies strongly interacted (Meković & Djurović, 1993). Both processes/landforms have received increasing interest over the last two decades (Djurović, 1996, 2009, 2011, 2012; Hughes, 2007, 2010; Hughes et al., 2011). The geomorphological map presented in this paper aims at creating a geomorphological framework for understanding the landforms and their development throughout the Quaternary in the Durmitor Mountains. It allows a better reconstruction and understanding of the climatic past of the Balkans and its geomorphological impact.

## 2. Material and methods

The Durmitor area (Figure 1) was initially studied on the macro scale by analysis of remote sensing data. Orthophotographs (1:2500) collected from the Real Estate Agency Montenegro and Japan International Cooperation Agency (2007) were used to visualise ground cover and as a basis layer during the production of the map. Google Earth offered additional advantages. First, vertical exaggeration of the 3D terrain amplifies terrain characteristics which are otherwise often overlooked, such as undulations on the plateau. Second, digitizing options allowed the compilation of transects, which facilitate interpretation of small-scale geomorphological entities. Orthophotographs and Google Earth are complementary in use and give important insights in to the macro geomorphology of the terrain and allow preliminary interpretations of landforms. These media prove to be important, since no stereoscopic aerial photographs could be consulted for the Durmitor area, which are frequently used for accurate remote sensing analyses (e.g. Boike & Yoshikawa, 2003).

A field campaign was organised during August and September 2012. The aim of the field survey was to collect ground data on the micro- and meso-scale landforms, which cannot easily be performed using remote sensing data alone. Features which were described during the field work are limestone pavements, alluvial fans, debris of varying size, glacial erratics (materials), soli-/gelifluction lobes, solifluction ribbles, river terraces, karst features and channel morphology (morphography/morphometry). Most hydrological, anthropogenic and vegetation characteristics were also observed on-site. Moreover, slope gradients of scree slopes and debris cones were measured with a clinometer. In addition, notes were made concerning the activity of those slopes. Finally, the glacial sedimentary environment was characterised through (i) measurements of the volumetric stone content and (ii) analysis of the particle size distribution of fine earth (< 2 mm) (Annys, Frankl, Spalević, Milić, & Nyssen, 2013). Ground-truth was recorded using a Garmin eTrex H handheld Global Positioning System receiver (GPS, < 10 m RMS, over 1300 terrain points). All observations were photographically documented and described in the field.

A profound knowledge of the terrain obtained through remote sensing analysis and fieldwork allowed the preparation of a detailed, terrain-fitting legend which provides a high diversity of



geomorphological information (Figure 2). Different properties of landforms are considered separately and organised in a ‘box of blocks’ legend. Building blocks of the legend are: processes/genesis, materials, morphology/morphometry, hydrography, vegetation and anthropogenic features. Only by combining the different symbols and colours on the map are landforms defined. This concept was first developed by De Graaff, De Jong, Rupke, and Verhofstad (1987) for large-scale mapping of complex mountainous areas and further refined and integrated into a

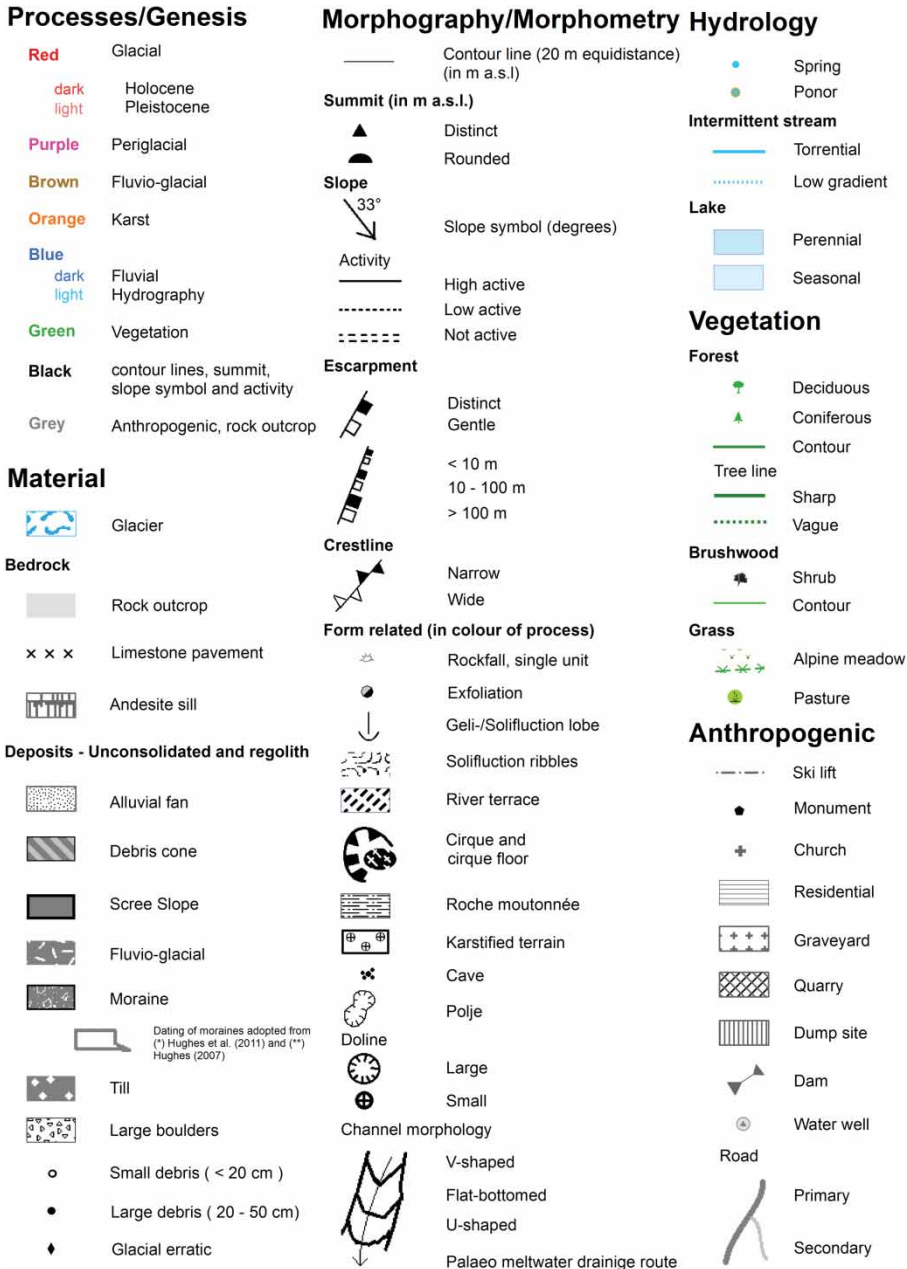


Figure 2. Box of blocks legend adjusted to the study area.

geographical information system (GIS) by Gustavsson, Kolstrup, and Seijmonsbergen (2006). The box of blocks legend has been applied to various environments (e.g., Evans, 2012; Frankl, Nyssen, Calvet, & Heyse, 2010; Loibl & Lehmkuhl, 2013; Poppe et al., 2013). The resulting thematic structure of the legend fits the practical implementation within a GIS, as unique features are represented by unique symbols.

Finally, the geomorphological map was produced within a GIS (Esri ArcMap 10.1) at a standard scale of 1:10 000. The geographic datum used is WGS 1984 and the projection a Transverse Mercator. Contour lines were derived from ASTER GDEM 30 m resolution (National Aeronautics and Space Administration, 2011) in ArcMap through use of the Spatial Analyst Contour tool. However, before contouring, data were first slightly smoothed using the function 'Focal Statistics' in the Spatial Analyst Tools, according to the proposed methodology of Price (2006).

### 3. Results

The geomorphological map includes both the northeastern part of the Durmitor Mountains and the surrounding lower plateau Jezerska Površ (Figure 1). Both areas have distinct glacial, periglacial and karst landforms. The main valley is Velika Kalica and is host to the small Debeli Namet glacier. The study area is a case study for mountainous areas in the Western Balkans which have undergone a similar environmental history.

#### 3.1. Glacial erosional and depositional features

Large U-shaped valleys with smoothed sidewalls were formed in the mountainous area during the middle-to-late Pleistocene glacial stages (Figure 3(a)). Glaciers moved towards the lower plateau, where topographic irregularities were smoothed and *roches moutonnées* of varying size and extent were formed (Figure 3(b)). These glaciers carried large amounts of debris supra-, en- or subglacially before they were melted out on the lower plateau along the glacier margin during a glacier stabilisation or recessional phase. Glacial deposits form several high elongated lateral moraines with gentle slopes, stretching from southwest to northeast. This indicates the former glacier flow orientation from the mountain towards the Tara canyon in the northeast, outside the study area. The Pitomine ridge northwest of Žabljak is a good example of a lateral moraine (Figure 3(c)), composed of materials from several former north-facing glaciers in the Durmitor Mountains. Polygenetic tills cover most of the remaining surface on the plateau and are characterised by the even or slightly undulating surface. Scattered glacial erratics ( $> 1 \text{ m}^3$ ) are also a primary distinguishing mark of the former glacial extent, although, only few were observed.

In the mountain valleys, gradual retreating glaciers deposited a series of arcuate, recessional latero-frontal moraines. The intervening valley floor is covered by a chaotic ensemble of large boulders (Figure 3(a)). The youngest moraine ridge is situated at the glacier snout of the avalanche-fed Debeli Namet glacier ( $0.05 \text{ km}^2$ ) beneath the backwall cliffs of Sljeme. Transverse crevasses indicate the glacier is still actively moving downwards and is not just a static ice-patch. Thin supraglacial moraines cover about one fifth of the glacier and can increase the summer melting due to a lowered albedo (Nakawo & Rana, 1999), albeit the pale-coloured limestone debris is less effective than dark-coloured debris (Paul, Machguth, & Kääb, 2005) (Figure 4). Former glaciers in the cirques in the southwest and in the east of the Velika Kalica valley, in the Mala Kalica valley and in the Savin Kuk valley are melted. In these cirques, small- to meso-scale *roches moutonnées* and limestone pavements are now exposed. Exfoliation due to pressure release is observed in the Savin Kuk valley.

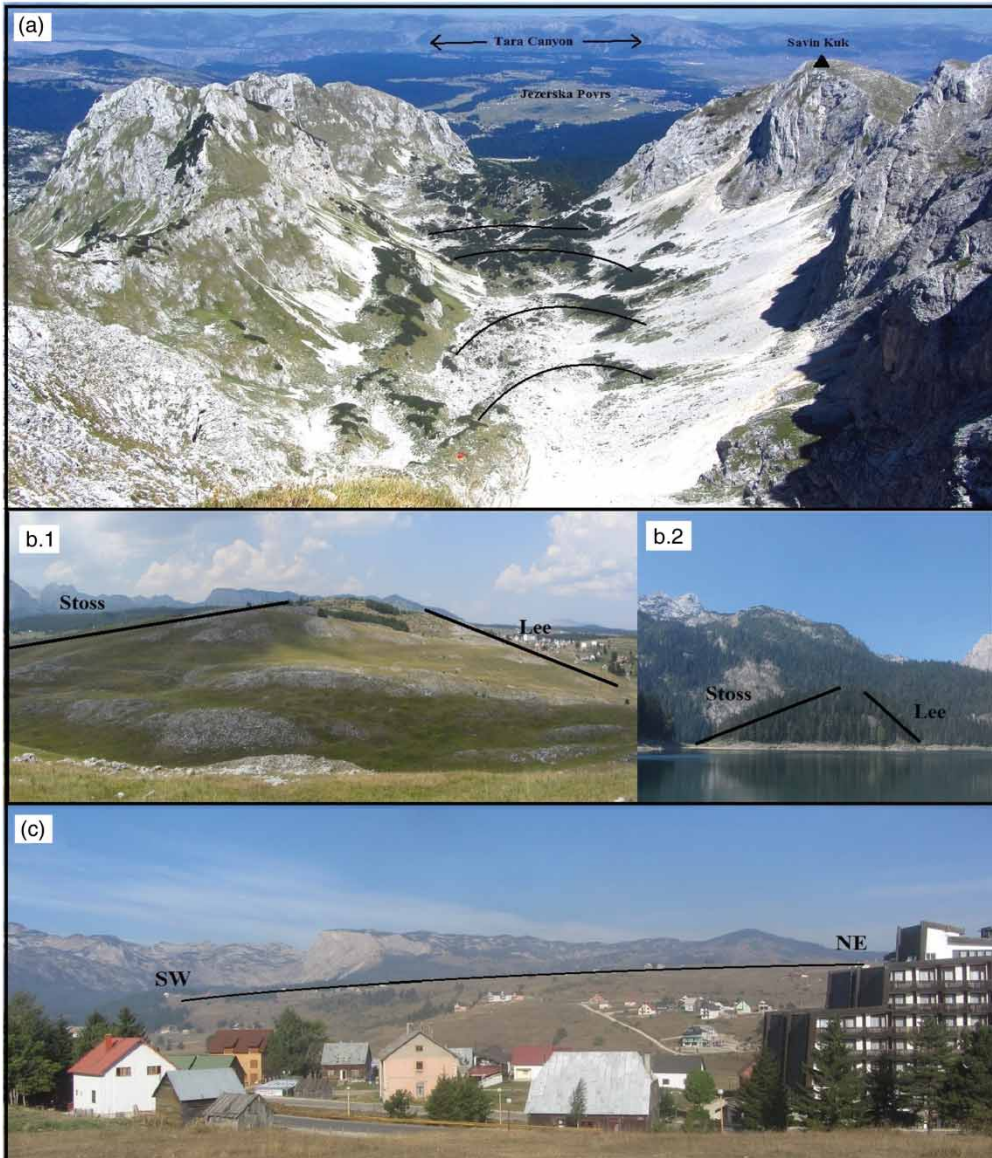


Figure 3. Glacial geomorphological features: (a) view from Vrh Sljemena (2455 m a.s.l.) towards the NE on Velika Kalica U-shaped valley with a series of Holocene moraine ridges, and on the undulating lower plateau Jezerska Povrs; (b) *Roches moutonnées* with stoss and lee side: (b.1) in the southeast of Žabljak; (b.2) between the two glacial lakes of Crno Jezero. (c) lateral moraine ridge Pitomine in the northwest of Žabljak with southwest – northeast orientation.

Based on U-series dating (Hughes, 2010; Hughes et al., 2011) and lichenometry (Hughes, 2007, 2010), glacial deposits on the plateau have been attributed to three middle-to-late Pleistocene glacial phases, while the recessional valley moraines are Holocene in age. The moraine ridge in front of the Debeli Namet glacier formed at the end of the Little Ice Age and was most recently modified at the end of the twentieth century (Hughes, 2007). Dates are also indicated on the geomorphological map.



Figure 4. Debeli Namet glacier at the beginning of September 2012, indicating the Little Ice Age moraine ridge and patches of supraglacial moraines.

### 3.2. Ice-marginal and periglacial landforms

During the most severe glacial phases, piedmont glaciers covered large parts of the study area and periglacial conditions prevailed in the ice-marginal areas. Under permafrost conditions, glacial meltwater streams incised the glacial deposits and bedrock on the plateau and formed an extensive network of channels. These channels merged in the northeast of the study area, from where meltwater was drained towards the Tara canyon some kilometres to the east. There is one palaeo meltwater drainage route, however, which is not connected to the network of channels, but drained meltwater northwards (Figure 5(a)). Analysis of Google Earth imagery showed that meltwater was drained towards a closed basin (Figure 5(b)). During fieldwork, profiles of thick packages of deposits were observed in a quarry in the closed basin (Figure 5(c)). Laboratory analysis of fine materials showed that the coarser sandy fractions are dominant. From these observations, the deposits are interpreted as fluvio-glacial in origin, and thus, the basin was once a proglacial lake. Sediment is partly melt-out material, although most was probably transported by glacial meltwater and summer rain. In addition, the lake was at some point captured through headward erosion at its northernmost point (Figure 5(a)), from which the lake drained towards the Tara Canyon in the north. Several palaeo meltwater channels and river terraces occur along its length, which could be attributed to variations in meltwater discharge through time. Climatic conditions ameliorated throughout the Holocene and smaller valley glaciers occurred in the inner-mountains. Consequently, meltwater discharge was geomorphologically of lesser importance and favoured the preservation of old middle Pleistocene deposits. The high permeability of the limestone rocks prevented strong and long-lasting fluvial erosion to occur (Smith, Nance, & Genes, 1997) and so both the moraine ridges and valley morphology are well-preserved (Gale & Hoare, 1997). For the same reason, surface runoff is low and water is scarce in the mountainous part of the study area.

Today, active periglacial processes dominate in the high-mountain region, where steep scree slopes form beneath cliffs. Other observed periglacial forms are geli-/solifluction lobes and solifluction ribbles on steep slopes and frost shattering. Finally, periglacial conditions also occur in karstic hollows, where ice patches survive summer warmth due to local topographic controls (Hughes et al., 2006).

### 3.3. Karst

Physical erosion was the dominant process during glacial stages, while chemical erosion is the dominant process during interglacial periods. Karst forms in the study area are most likely Holocene in age, with older karst forms likely erased by glacial erosion.



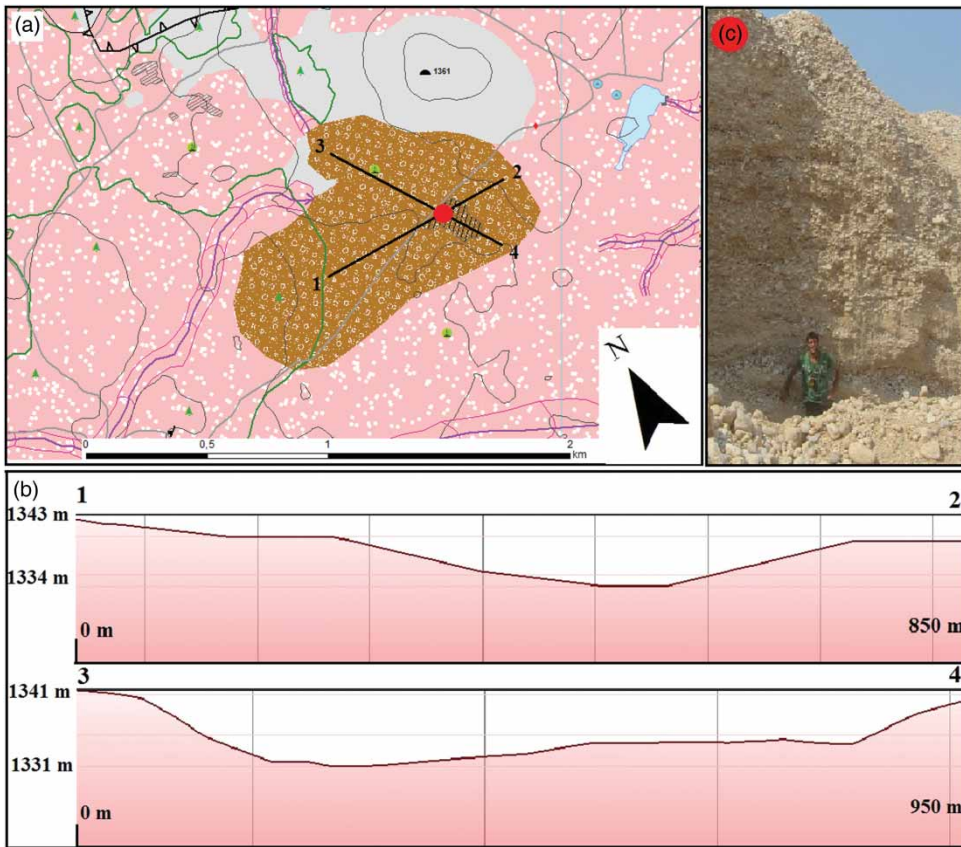


Figure 5. Former proglacial lake on the plateau Jezerska Površ: (a) snapshot from the geomorphological map, indicating its capture through headward erosion in the north; (b) height profiles from Google Earth (1–2, 3–4; see Fig 5.a); (c) quarry profile of fluvio-glacial materials.

On the lower plateau, few karst processes are observed since bedrock is mostly covered by glacial deposits. However, two roof-collapsed dolines are observed and in some places, the surface morphology of the tills is more hummocky than its direct surroundings, which are interpreted as a karstified terrain beneath a shallow depth of glacial materials. In the mountainous part of the study area, more karst forms occur. Many forms are too small to be represented on the geomorphological map and are, instead, subdivided in to different karstified terrain. The observed karst forms are deep grikes (*kluftkarren*), small runnels (*rundkarren*), pans and pits (*kamenitzas*) on individual blocks, meso- and large-scale grooves on vertical walls (*rillenkarst*), caves, small and large dolines and a polje (Figure 6). Terminology is based on Waltham, Simms, Farrant, and Goldie (1997) and Lewin and Woodward (2009).

Furthermore, karst forms tend to accumulate snow masses from which glacier growth could originate (Hughes et al., 2006). Therefore, pre-glacial karst forms could have enhanced initial glacier growth, forming glacio-karstic landforms. Cvijić (1917) even introduced the term ‘karst-glacier’ in the Dinaric Alps as a new type of glacier. The relationship between glacial and karstic landforms is dual. In the mountainous area, former glaciated terrains are strongly modified by chemical erosion, forming karstic-glacial landforms. Closed depressions here drain water from the surrounding slopes, for instance after snowmelt or summer rains, where it

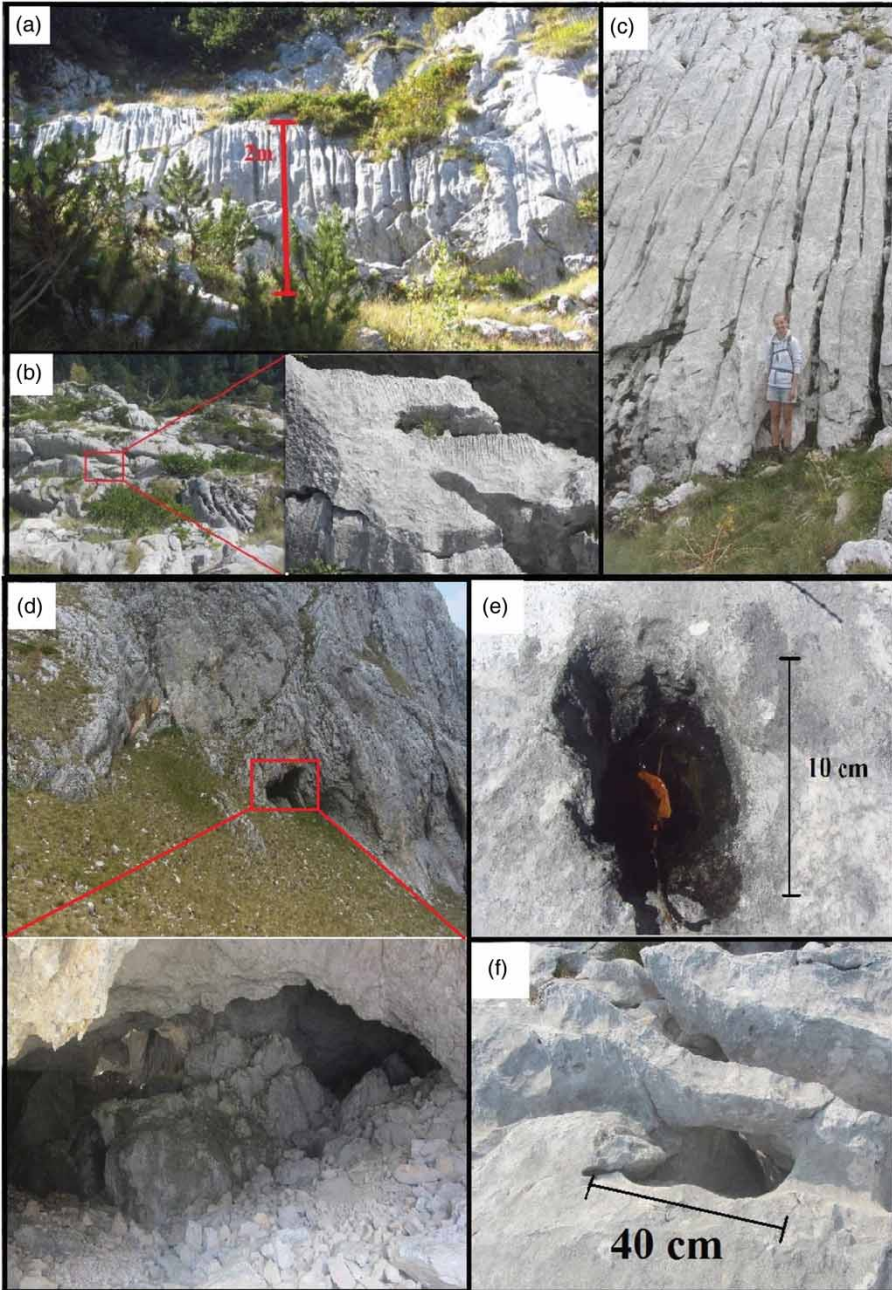


Figure 6. Karst forms observed in the field: (a) grikes at meso-scale (*kluftkarren*); (b) runnels at micro-scale (*rundkarren*) (c) grooves at macro-scale (*rillenkarst*); (d) cave; (e) pan; (f) pit (*kamenitzas*).

percolates deep into the rocks. Karst forms appear due to the dissolution of the soluble limestone rocks. Cirque floors, for instance, are covered by dolines. The relationship may be dual, but cyclic alternation of cold and warm stages may result in the development of polygenetic and polymorphic forms (Djurović, Petrović, & Simić, 2010; Klimchouk, Bayari, Nazik, & Törk, 2006), which leads to an increasingly complex terrain.

#### 4. Conclusions

The geomorphological map, prepared from detailed field survey and analysis of orthophotographs and Google Earth imagery, shows part of the Durmitor area, of which the topographic character is predominantly shaped by glacial and periglacial processes. During three middle-to-late Pleistocene glacial phases, elongated lateral moraines and tills were deposited on the plateau. Palaeo meltwater flows incised and formed a well-connected network of drainage channels, of which the outlet in the northwest leads towards the Tara canyon. In the Alpine uplands, a series of smaller, well-preserved recessional moraines of Holocene age occur. Here, frost shattering is the dominant contemporary geomorphological process, forming steep scree slopes beneath high cliffs.

The large-scale geomorphological map is the first of its kind in the Durmitor area and aims to help reconstruction of the evolution of the landscape in order to fully understand the current geomorphological setting. The cartographic legend is adjusted to the specific study area, but the classification of elementary symbols and graphics is deliberately available for extension to one's own research objectives. For this reason it is proposed to use the structure and major subdivisions of the legend as a steppingstone for the development of legends applied to large-scale maps of similar geomorphological areas. In conclusion, the presented map and accompanying legend serve as valuable tools for Quaternary research in the Durmitor Mountains, and in addition in the mountains of the Western Balkan, to reconstruct and understand the climatic past and its geomorphological impact upon the landscape.

#### Software

The glacio-geomorphological map is partly based on analysis of Google Earth imagery and is constructed in Esri ArcMap 10.1.

#### Acknowledgements

This research was carried out as part of K.A.'s Master's thesis at Ghent University. Johan Annys and Cecile Noterdaeme are thanked for their support. The authors would like to thank Dr. Predrag Djurović and Dr. Dragan Borota for providing essential information. Special thanks to Dr. Velibor Spalević for the logistic and accommodation facilities he offered during field work.

#### Supplementary data

The geomorphological maps of the Durmitor Mountains and surrounding plateau Jezerska Površ (Montenegro) can be found as supplementary data on: <http://dx.doi.org/10.1080/17445647.2014.909338>

#### References

- Annys, K., Frankl, A., Spalević, V., Milić, Č., & Nyssen, J. (2013) Geomorphological mapping of glacial features in the Durmitor Mountains (Montenegro) and implications for palaeoclimates (Unpublished master's thesis). Ghent University, Department of Geography, Ghent, Belgium.
- Boike, J., & Yoshikawa, K. (2003). Mapping of periglacial geomorphology using kite/balloon aerial photography. *Permafrost and Periglacial Processes*, 14, 81–85. doi:10.1002/ppp.437.
- Cvijić, J. (1917). L'époque glaciaire dans la péninsule balkanique. *Annales de Géographie*, 26, 189–218. Retrieved from [http://www.persee.fr/web/revues/home/prescript/article/geo\\_0003-4010\\_1917\\_num\\_26\\_141\\_8628](http://www.persee.fr/web/revues/home/prescript/article/geo_0003-4010_1917_num_26_141_8628)
- De Graaf, L. W. S., De Jong, M. G. G., Rupke, J., & Verhofstad, J. (1987). A geomorphological mapping system at scale 1:10 000 for mountainous areas. *Zeitschrift für Geomorphologie*, 31, 229–242.



- Djurović, P. (1996). *Visokoplaninski kras Durmitora – geomorfološka studija* (Unpublished doctoral dissertation) Faculty of Geography, Belgrade.
- Djurović, P. (2009). Reconstruction of the Pleistocene glaciers of Mount Durmitor in Montenegro. *Acta Geographica Slovenica*, 49, 263–289. doi:10.3986/AGS49202.
- Djurović, P. (2011). *Visokoplaninski kras Durmitora* [High mountain karst on Durmitor]. Belgrade: Forma B.
- Djurović, P. (2012). The Debeli Namet glacier from the second half of the 20th century to the present. *Acta geographica Slovenica*, 52, 277–301 doi:10.3986/AGS52201.
- Djurović, P., Petrović, A. S., & Simić, S. (2010). The overall impact of Pleistocene glaciation on morphological diversity of uvalas at Durmitor and Žijovo. *Serbian Geographical Society*, 90, 17–34. doi:10.2298/GSGD1001017D.
- Evans, I. S. (2012). Geomorphometry and landform mapping: What is a landform?. *Geomorphology*, 137, 94–106. doi:10.1016/j.geomorph.2010.09.029.
- Fagan, B. M. (2009). *The complete Ice Age: How climate change shaped the world*. London: Thames & Hudson.
- Frankl, A., Nyssen, J., Calvet, M., & Heyse, I. (2010). Use of digital elevation models to understand and map glacial landforms - the case of the Canigou Massif (Eastern Pyrenees, France). *Geomorphology*, 115, 78–89. doi:10.1016/j.geomorph.2009.09.032.
- Gale, S. J., & Hoare, P. G. (1997). The glacial history of the northwest Picos de Europa of northern Spain. *Zeitschrift für Geomorphologie*, 41, 81–96. <http://dx.doi.org/10.1016/j.yqres.2012.10.005>
- Grunewald, K., & Scheithauer, J. (2010). Europe's southernmost glaciers: Response and adaptation to climate change. *Journal of Glaciology*, 56, 129–142. doi:10.3189/002214310791190947.
- Gustavsson, M., Kolstrup, E., & Seijmonsbergen, A. C. (2006). A new symbol-and-GIS based detailed geomorphological mapping system: Renewal of a scientific discipline for understanding landscape development. *Geomorphology*, 77, 90–111. Retrieved from <http://dx.doi.org/10.1016/j.geomorph.2006.01.026>
- Hughes, P. D. (2007). Recent behaviour of the Debeli Namet glacier, Durmitor, Montenegro. *Earth Surface Processes and Landforms*, 32, 1593–1602. doi:10.1002/esp.1537.
- Hughes, P. D. (2010). Little ice age glaciers in the Balkans: Low altitude glaciation enabled by cooler temperatures and local topoclimatic controls. *Earth Surface Processes and Landforms*, 35, 229–241. doi:10.1002/esp.1916.
- Hughes, P. D., & Braithwaite, R. J. (2008). Application of a degree-day model to reconstruct Pleistocene glacial climates. *Quaternary Research*, 69, 110–116. doi:10.1016/j.yqres.2007.10.008.
- Hughes, P. D., Woodward, J. C., & Gibbard, P. L. (2006). Quaternary glacial history of the Mediterranean mountains. *Progress in Physical Geography*, 30, 334–364. doi:10.1191/0309133306pp481ra.
- Hughes, P. D., Woodward, J. C., van Calsteren, P. C., & Thomas, L. E. (2011). The glacial history of the Dinaric Alps, Montenegro. *Quaternary Science Reviews*, 30, 3393–3412. doi:10.1016/j.quascirev.2011.08.016.
- Hughes, P. D., Woodward, J. C., van Calsteren, P. C., Thomas, L. E., & Adamson, K. (2010). Pleistocene ice caps on the coastal mountains of the Adriatic Sea: Palaeoclimatic and wider palaeoenvironmental implications. *Quaternary Science Reviews*, 29, 3690–3708.
- Kern, Z., Suranyi, G., Molnar, M., Nagy, B., & Balogh, D. (2006). Investigation of natural perennial ice deposits of Durmitor Mts., Montenegro. *Proceedings of the 2nd international workshop on ice caves. Demanovska dolina*.
- Klimchouk, A., Bayari, S., Nazik, L., & Törk, K. (2006). Glacial destruction of cave systems in high mountains, with a special reference to the Aladaglar massif, Central Taurus, Turkey. *Acta Carsologica*, 35, 111–121. Retrieved from <http://carsologica.zrc-sazu.si/downloads/352/klimchouk.pdf>
- Kottek, M., Grieser, J., Beck, C., Rudolf, B., & Rubel, F. (2006). World map of the Köppen-Geiger climate classification updated. *Meteorologische Zeitschrift*, 15, 259–263. <http://dx.doi.org/10.1127/0941-2948/2006/0130>
- Lewin, J., & Woodward, J. C. (2009). Karst geomorphology and environmental change. In J. C. Woodward (Ed.), *The physical geography of the mediterranean* (pp. 287–318). Oxford: University press.
- Loibl, D., & Lehmkuhl, F. (2013). High-resolution geomorphological map of a low mountain range near Aachen, Germany. *Journal of Maps*, 9, 245–253. doi:10.1080/17445647.2013.771291.
- Meković, L., & Djurović, P. (1993). A detailed geomorphological map - The basis for evaluation of the national park area "Lovćen". *Bulletin de la societe Serbe de Geographie*, XIII, 2, Belgrade.
- Morley, M. W. (2007). *Mediterranean Quaternary rockshelter sediment records: a multi-proxy approach to environmental reconstruction* (Unpublished doctoral thesis). Department of Geography, School of Environment and Development, University of Manchester, United Kingdom.



- Nakawo, M., & Rana, B. (1999). Estimate of ablation rate of glacier ice under a supraglacial debris layer. *Geografiska Annaler*, 81, 695–701. doi:10.1111/1468-0459.00097.
- National Aeronautics and Space Administration (NASA). (2011). The ASTER GDEM. 'ASTGTM2\_N43E018' and 'ASTGTM2\_N43E019'. Retrieved from [http://reverb.echo.nasa.gov/reverb/#utf8=%E2%9C%93&spatial\\_map=satellite&spatial\\_type=rectangle](http://reverb.echo.nasa.gov/reverb/#utf8=%E2%9C%93&spatial_map=satellite&spatial_type=rectangle)
- Nyssen, J., Van den Branden, J., Spalević, V., Frankl, A., Van de velde, L., Čurović, M., & Billi, P. (2012). Twentieth century land resilience in Montenegro and consequent hydrological response. *Land Degradation & Development*. doi:10.1002/ldr.2143.
- Paul, F., Machguth, H., & Kääb, A. (2005). On the impact of glacier albedo under conditions of extreme glacier melt: The summer of 2003 in the Alps. *EARSeL eProceedings*, 4, 139–149.
- Poppe, L., Frankl, A., Poesen, J., Admasu, T., Dessie, M., Adgo, E., Deckers, J., & Nyssen, J. (2013). Geomorphology of the Lake Tana basin, Ethiopia. *Journal of Maps*, 9, 431–437. doi:10.1080/17445647.2013.801000.
- Price, M. (2006). Creating cool contours: Modeling glacial terrain with ArcGIS. *ArcUser*. Retrieved from <http://www.esri.com/news/arcuser/0506/files/coolglaciers.pdf>
- Real Estate Agency Montenegro, & Japan International Cooperation Agency. (2007). Ortho-images of Montenegro, 1:25.000. Real Estate Agency of Montenegro, Geoportal, Podgorica.
- Smith, G. W., Nance, R. D., & Genes, A. N. (1997). Quaternary glacial history of Mount Olympus, Greece. *Geological Society of America Bulletin*, 109, 809–824. doi:10.1130/0016-7606(1997)109<0809:QGHOMO>2.3.CO;2.
- Waltham, A. C., Simms, M. J., Farrant, A. R., & Goldie, H. S. (1997). *Karst and caves of Great Britain*. London: Chapman and Hall.